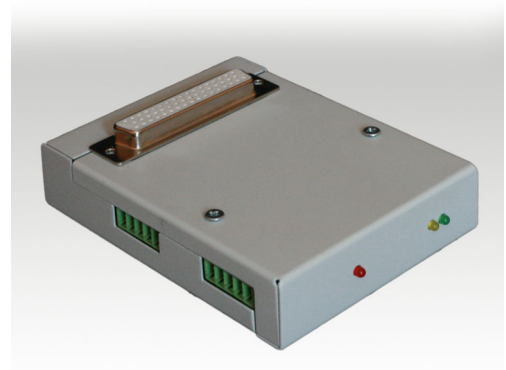


# COM-UKED



## 1 FEATURES

- Reading the status of the hoist's safety circuit contacts
- Plug compatible with the UKED system
- Multiple devices in a network (daisy chain)

## 2 TECHNICAL SPECIFICATIONS

|                                |  |
|--------------------------------|--|
| Power supply voltage           | 24 V DC $\pm 5\%$<br>28 V DC $\pm 5\%$ |
| Power consumption              | 1.2 W (3 W max)                        |
| Dimensions [mm]                | 82×104×24                              |
| Number of inputs               | 16                                     |
| Operating temperature          | 10°C to 60°C                           |
| Storage temperature            | -40°C to 80°C                          |
| Physical layer                 | 2×EIA-485                              |
| Baud rate                      | 115.2 kbps                             |
| Data link layer                | SPRUKED                                |
| Application layer              | BDATA                                  |
| Transmission circuit isolation | $\geq 1000$ V                          |

## 3 INPUT CIRCUIT'S PARAMETERS

|                                    |                 |
|------------------------------------|-----------------|
| „0” logic state voltage            | $\leq 0.4$ V DC |
| „1” logic state voltage            | $\geq 2.1$ V DC |
| Current lapse in case of a failure | $\leq 1$ mA     |

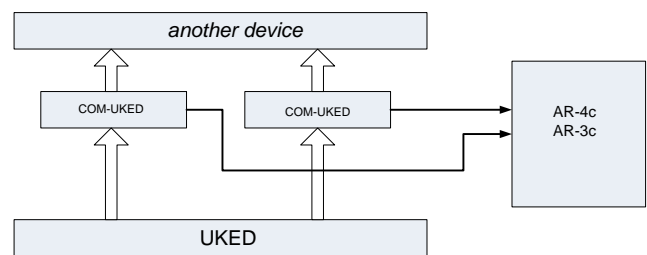


Figure 1: COM-UKED block diagram.

## 4 CONFIGURATION

|   | Sampling frequency | Nodes limit |
|---|--------------------|-------------|
| 0 | 1000 Hz            | 2           |
| 1 | 500 Hz             | 4           |
| 2 | 200 Hz             | 11          |
| 3 | 100 Hz             | 16          |

Maximal sampling period  $T_{MAX} = 20$  ms

## 5 ORDERING GUIDE

| Order code  | Description                                    |
|-------------|--|
| COM-UKED    | COM-UKED device                                |
| RS-232/485A | RS-232/RS-485 converter with terminator + bias |
| RS-232/422  | RS-232/RS-422 converter                        |